



Geary Public Schools  
Factual Information

It is not surprising that when considering something as serious as the construction of new school facilities, many have strong opinions. It is our aim in this document to provide factual information to aid you in deciding what you will do on February 12.

1. We've heard it stated that school facilities do not impact student learning. What, though, are the facts?

Facts: The new school will utilize more natural sunlight which can increase student progress 20% faster in math and 26% faster in reading! One consistent research finding across children of all ages is that the temperature in which a person works affects engagement levels and overall productivity—including student achievement.<sup>1</sup> With classrooms in a basement, and consistent HVAC issues, our current facilities make it difficult to meet student needs in this regard. The new school will allow these issues to be addressed in the most cost effective manner possible.

2. We've heard it stated that there isn't a need for a new school at this time. What are the facts?

Facts: The proposed school will be ADA compliant. This is a necessity as we seek to increase the number of stakeholders welcomed into our buildings. In the new facility, no one will be required to use stairs to gain access to classrooms.

Additionally, the issues with our current building are many. Unreliable telecom systems<sup>2</sup> (located in a janitorial closet), electrical/HVAC/plumbing issues (scorched plugs, locked classroom closet with an exposed sump pump, clogged water lines<sup>3</sup>), and even structural issues<sup>4</sup> make it a challenge to deliver daily instruction.

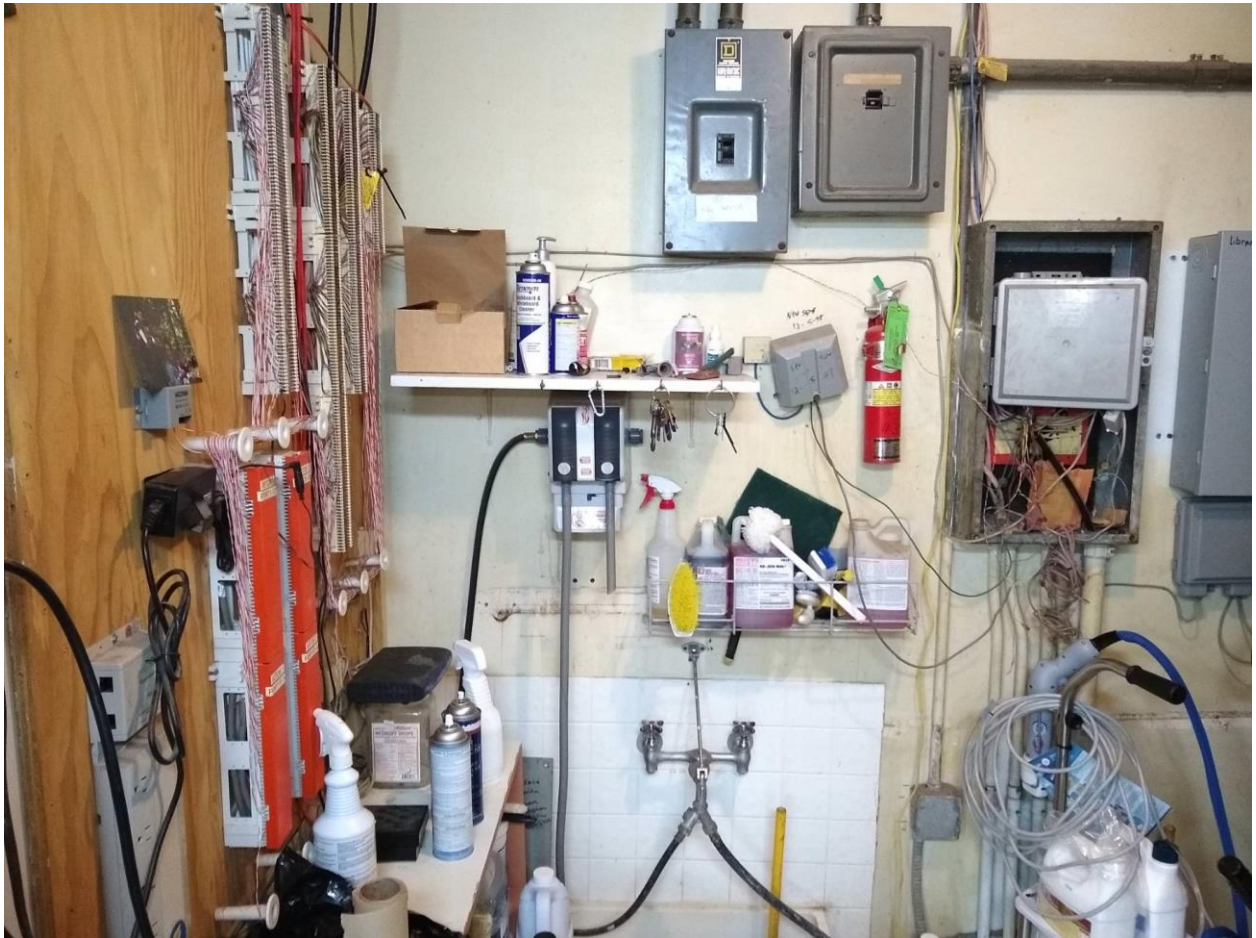
*Todd Glasgow Superintendent*  
110 SW Embree  
Geary, OK. 73040  
405-884-5601  
Fax 405-884-2099  
tglasgow@geary.k12.ok.us

*Bart Daniel, High School Principal*  
300 S Blaine  
Geary, OK. 73040  
405-884-5605  
Fax 405-884-5487  
trawls@geary.k12.ok.us

*Sean Buchanan, Elementary Principal*  
221 S Galena  
Geary, OK. 73040  
405-884-5701  
Fax 405-884-2983  
sbuchanan@geary.k12.ok.us

## References/Background Information

<sup>1</sup> <https://sites.psu.edu/ceepa/2015/06/07/the-importance-of-school-facilities-in-improving-student-outcomes/>



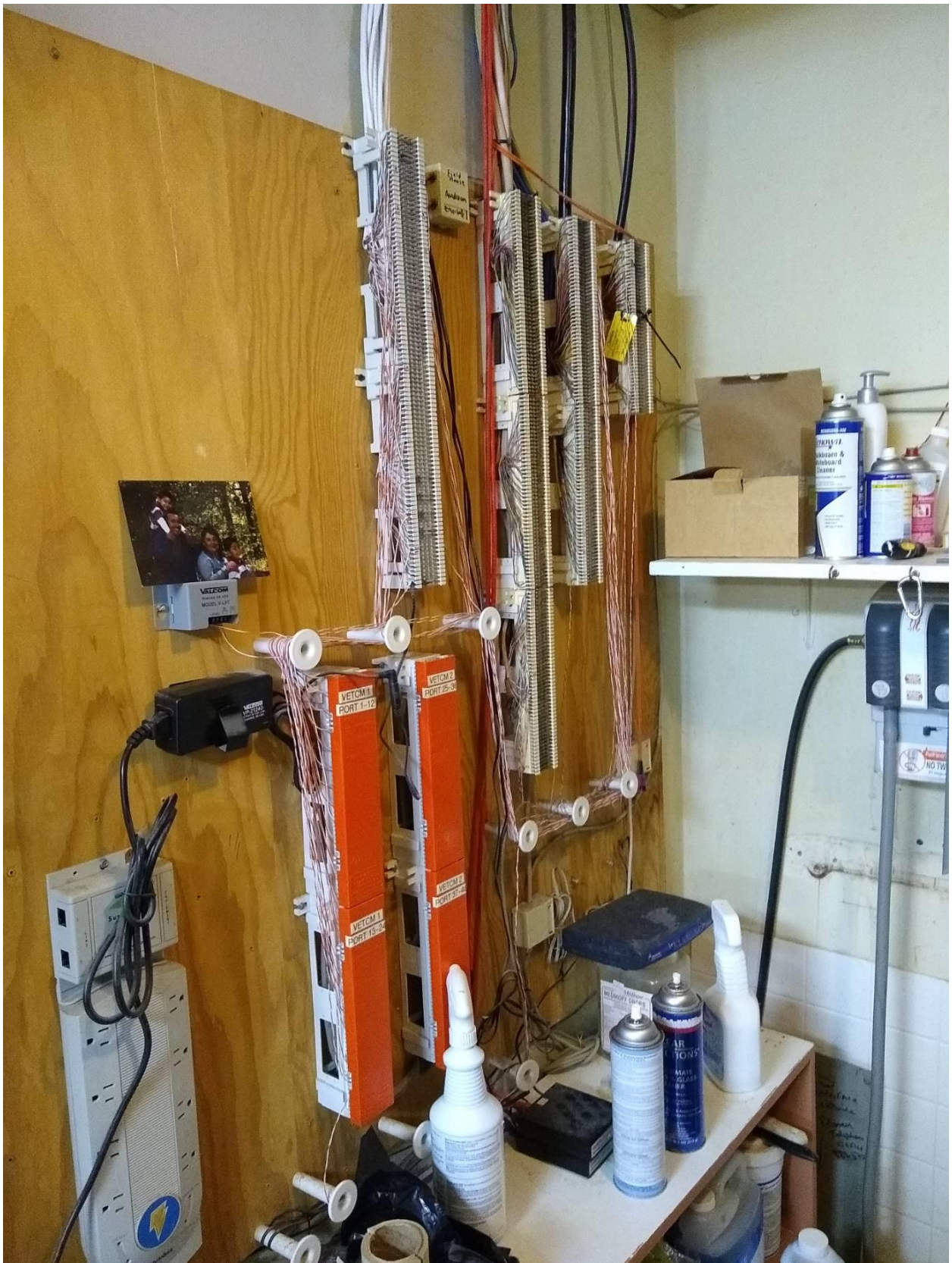
Telecom system in the closet.

**Todd Glasgow Superintendent**  
110 SW Embree  
Geary, OK. 73040  
405-884-5601  
Fax 405-884-2099  
tglasgow@geary.k12.ok.us

**Bart Daniel, High School Principal**  
300 S Blaine  
Geary, OK. 73040  
405-884-5605  
Fax 405-884-5487  
trawls@geary.k12.ok.us

**Sean Buchanan, Elementary Principal**  
221 S Galena  
Geary, OK. 73040  
405-884-5701  
Fax 405-884-2983  
sbuchanan@geary.k12.ok.us





Telecom system in the closet.

**Todd Glasgow Superintendent**  
 110 SW Embree  
 Geary, OK. 73040  
 405-884-5601  
 Fax 405-884-2099  
[tglasgow@geary.k12.ok.us](mailto:tglasgow@geary.k12.ok.us)

**Bart Daniel, High School Principal**  
 300 S Blaine  
 Geary, OK. 73040  
 405-884-5605  
 Fax 405-884-5487  
[trawls@geary.k12.ok.us](mailto:trawls@geary.k12.ok.us)

**Sean Buchanan, Elementary Principal**  
 221 S Galena  
 Geary, OK. 73040  
 405-884-5701  
 Fax 405-884-2983  
[sbuchanan@geary.k12.ok.us](mailto:sbuchanan@geary.k12.ok.us)





Telecom system in the closet.

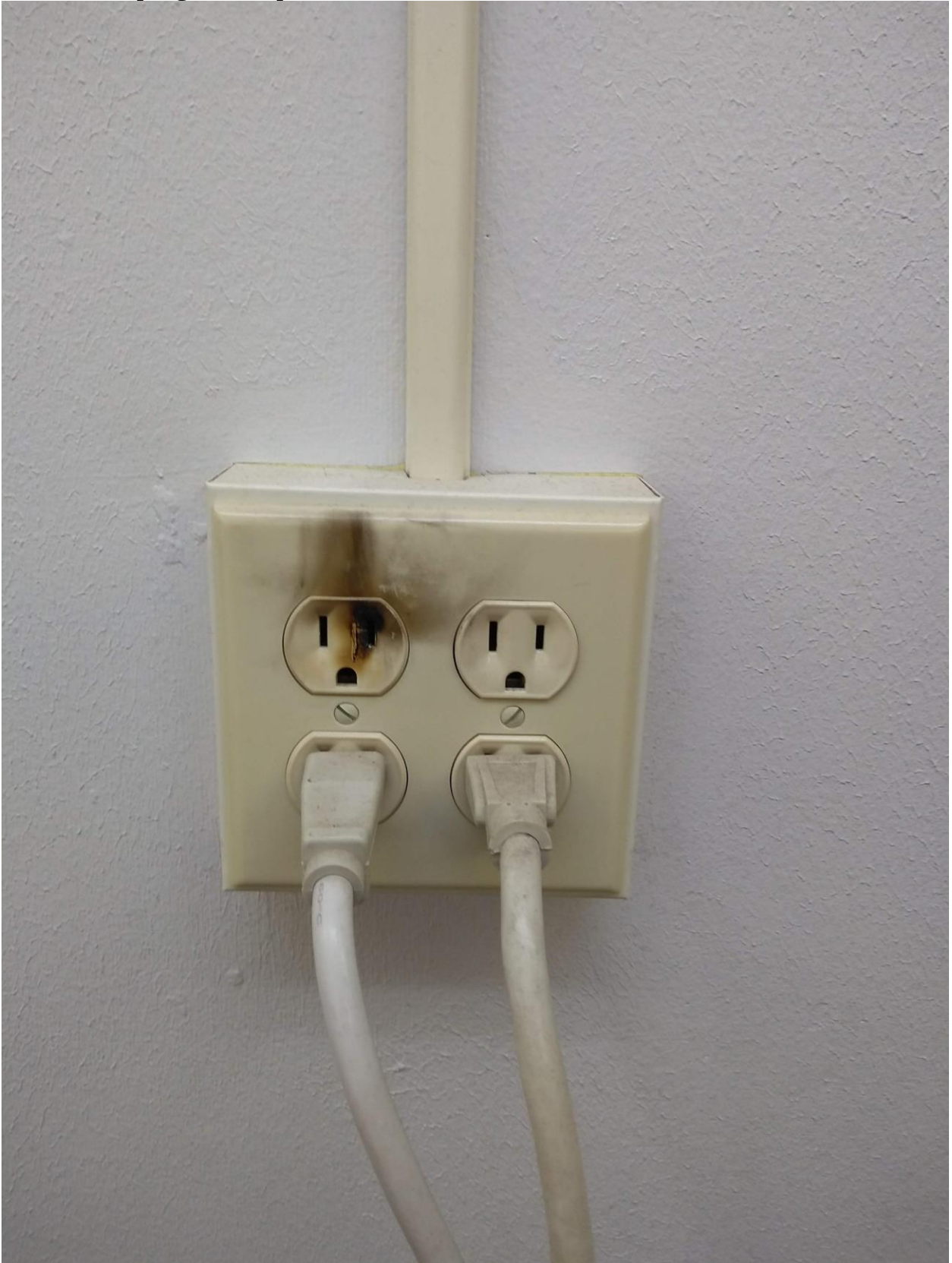
**Todd Glasgow Superintendent**  
 110 SW Embree  
 Geary, OK. 73040  
 405-884-5601  
 Fax 405-884-2099  
[tglasgow@geary.k12.ok.us](mailto:tglasgow@geary.k12.ok.us)

**Bart Daniel, High School Principal**  
 300 S Blaine  
 Geary, OK. 73040  
 405-884-5605  
 Fax 405-884-5487  
[trawls@geary.k12.ok.us](mailto:trawls@geary.k12.ok.us)

**Sean Buchanan, Elementary Principal**  
 221 S Galena  
 Geary, OK. 73040  
 405-884-5701  
 Fax 405-884-2983  
[sbuchanan@geary.k12.ok.us](mailto:sbuchanan@geary.k12.ok.us)



<sup>3</sup> Scorched plug in computer lab



*Todd Glasgow Superintendent  
110 SW Embree  
Geary, OK. 73040  
405-884-5601  
Fax 405-884-2099  
tglasgow@geary.k12.ok.us*

*Bart Daniel, High School Principal  
300 S Blaine  
Geary, OK. 73040  
405-884-5605  
Fax 405-884-5487  
trawls@geary.k12.ok.us*

*Sean Buchanan, Elementary Principal  
221 S Galena  
Geary, OK. 73040  
405-884-5701  
Fax 405-884-2983  
sbuchanan@geary.k12.ok.us*

<sup>3</sup> Sump pump in basement classroom closet



**Todd Glasgow Superintendent**  
110 SW Embree  
Geary, OK. 73040  
405-884-5601  
Fax 405-884-2099  
tglasgow@geary.k12.ok.us

**Bart Daniel, High School Principal**  
300 S Blaine  
Geary, OK. 73040  
405-884-5605  
Fax 405-884-5487  
trawls@geary.k12.ok.us

**Sean Buchanan, Elementary Principal**  
221 S Galena  
Geary, OK. 73040  
405-884-5701  
Fax 405-884-2983  
sbuchanan@geary.k12.ok.us



<sup>3</sup> Sump pump in basement classroom closet



**Todd Glasgow Superintendent**  
110 SW Embree  
Geary, OK. 73040  
405-884-5601  
Fax 405-884-2099  
tglasgow@geary.k12.ok.us

**Bart Daniel, High School Principal**  
300 S Blaine  
Geary, OK. 73040  
405-884-5605  
Fax 405-884-5487  
trawls@geary.k12.ok.us

**Sean Buchanan, Elementary Principal**  
221 S Galena  
Geary, OK. 73040  
405-884-5701  
Fax 405-884-2983  
sbuchanan@geary.k12.ok.us



<sup>3</sup> Sump pump in basement classroom closet

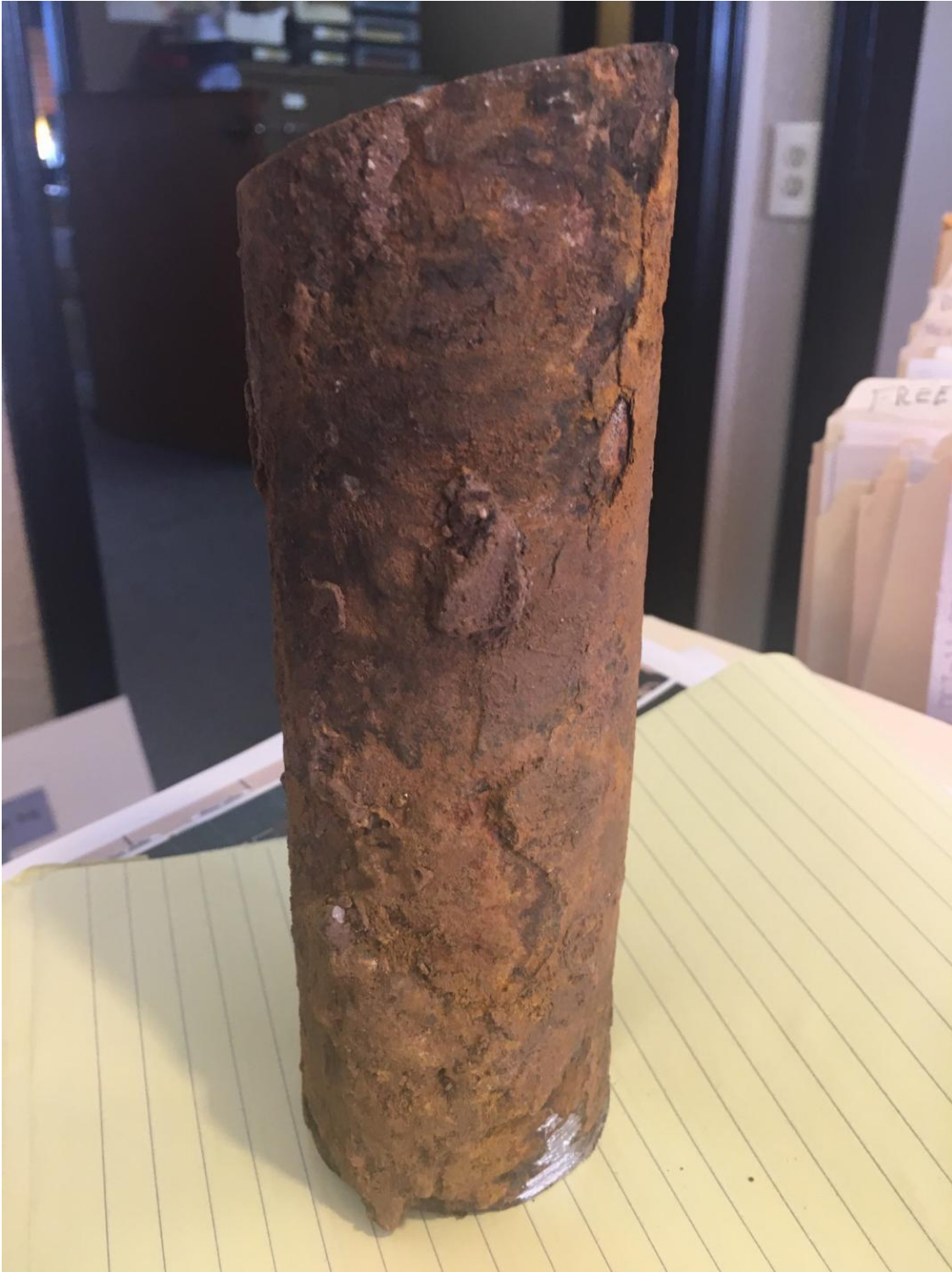


**Todd Glasgow Superintendent**  
110 SW Embree  
Geary, OK. 73040  
405-884-5601  
Fax 405-884-2099  
tglasgow@geary.k12.ok.us

**Bart Daniel, High School Principal**  
300 S Blaine  
Geary, OK. 73040  
405-884-5605  
Fax 405-884-5487  
trawls@geary.k12.ok.us

**Sean Buchanan, Elementary Principal**  
221 S Galena  
Geary, OK. 73040  
405-884-5701  
Fax 405-884-2983  
sbuchanan@geary.k12.ok.us





<sup>3</sup> Corroded water line

*Todd Glasgow Superintendent  
110 SW Embree  
Geary, OK. 73040  
405-884-5601  
Fax 405-884-2099  
tglasgow@geary.k12.ok.us*

*Bart Daniel, High School Principal  
300 S Blaine  
Geary, OK. 73040  
405-884-5605  
Fax 405-884-5487  
trawls@geary.k12.ok.us*

*Sean Buchanan, Elementary Principal  
221 S Galena  
Geary, OK. 73040  
405-884-5701  
Fax 405-884-2983  
sbuchanan@geary.k12.ok.us*



### <sup>3</sup> Corroded water line

*Todd Glasgow Superintendent  
110 SW Embree  
Geary, OK. 73040  
405-884-5601  
Fax 405-884-2099  
tglasgow@geary.k12.ok.us*

*Bart Daniel, High School Principal  
300 S Blaine  
Geary, OK. 73040  
405-884-5605  
Fax 405-884-5487  
trawls@geary.k12.ok.us*

*Sean Buchanan, Elementary Principal  
221 S Galena  
Geary, OK. 73040  
405-884-5701  
Fax 405-884-2983  
sbuchanan@geary.k12.ok.us*





<sup>4</sup> Structural issue in basement classroom.

*Todd Glasgow Superintendent  
110 SW Embree  
Geary, OK. 73040  
405-884-5601  
Fax 405-884-2099  
tglasgow@geary.k12.ok.us*

*Bart Daniel, High School Principal  
300 S Blaine  
Geary, OK. 73040  
405-884-5605  
Fax 405-884-5487  
trawls@geary.k12.ok.us*

*Sean Buchanan, Elementary Principal  
221 S Galena  
Geary, OK. 73040  
405-884-5701  
Fax 405-884-2983  
sbuchanan@geary.k12.ok.us*